



INTEQ

Company : Santos

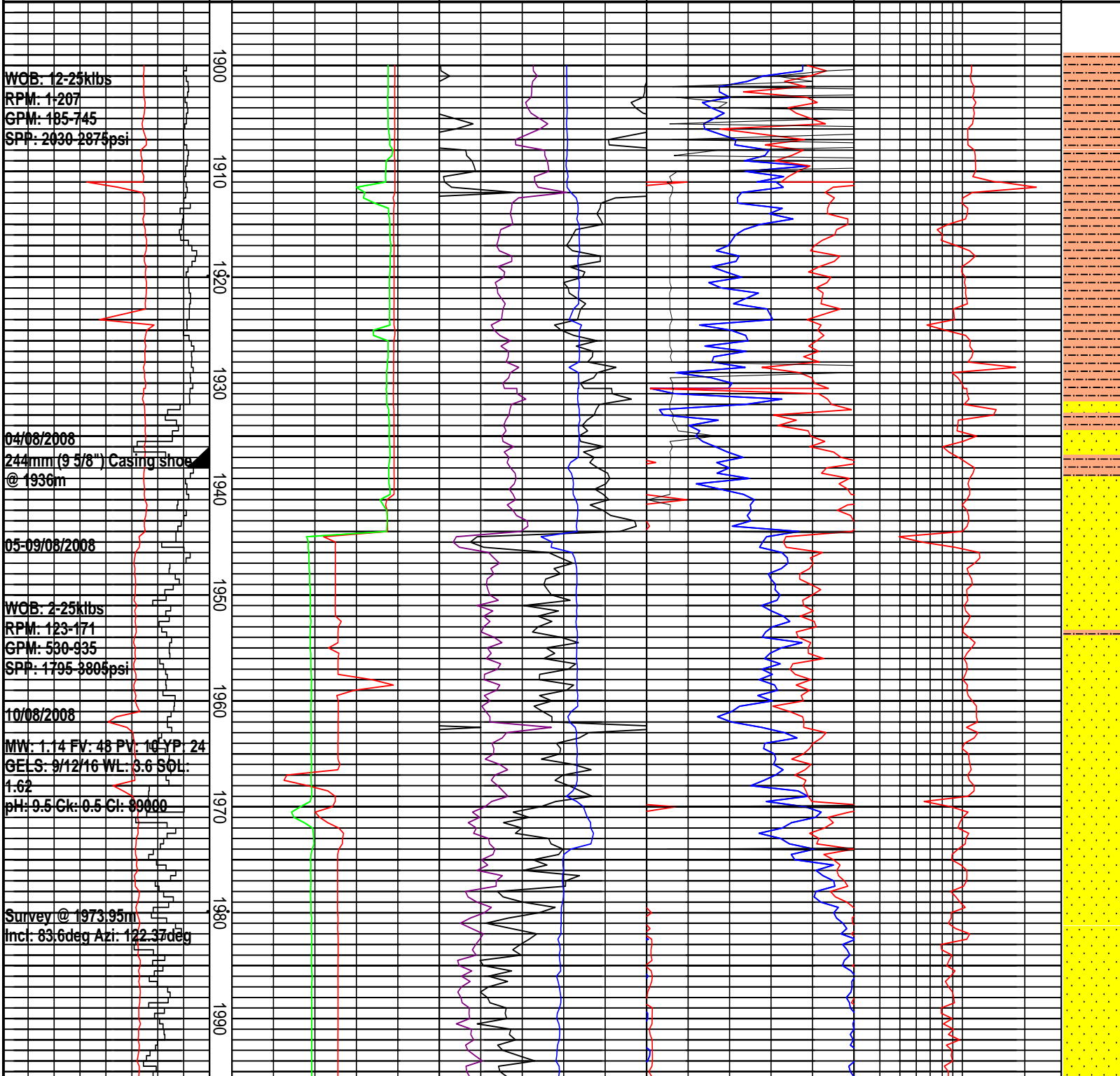
Well : Netherby 1DW1

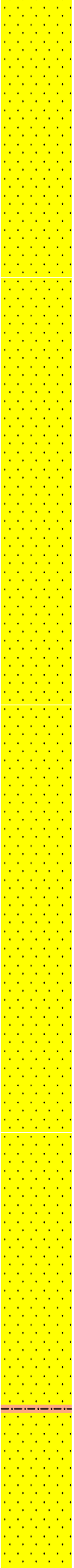
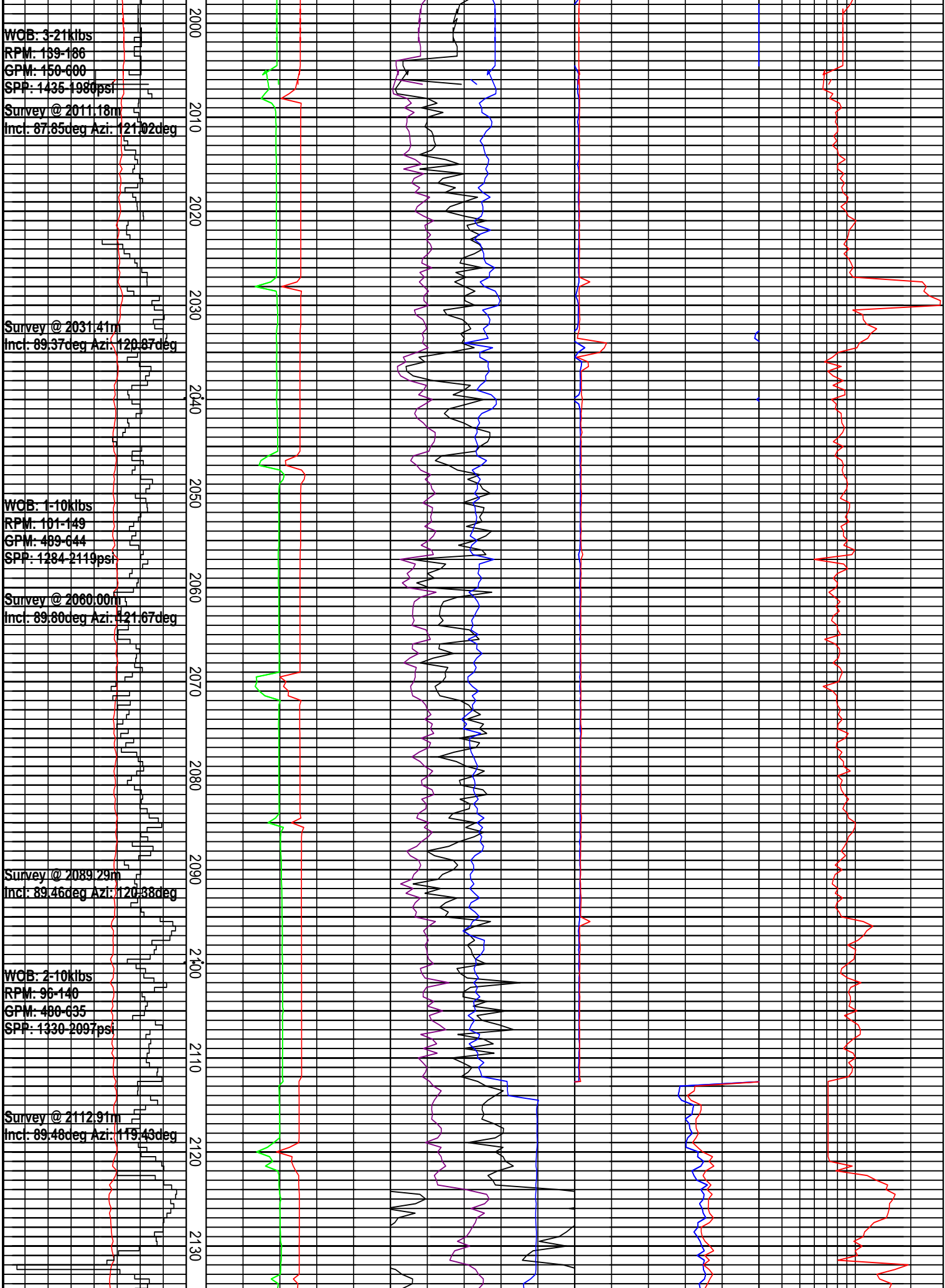
Interval : 1900.00 - 2258.00 meters

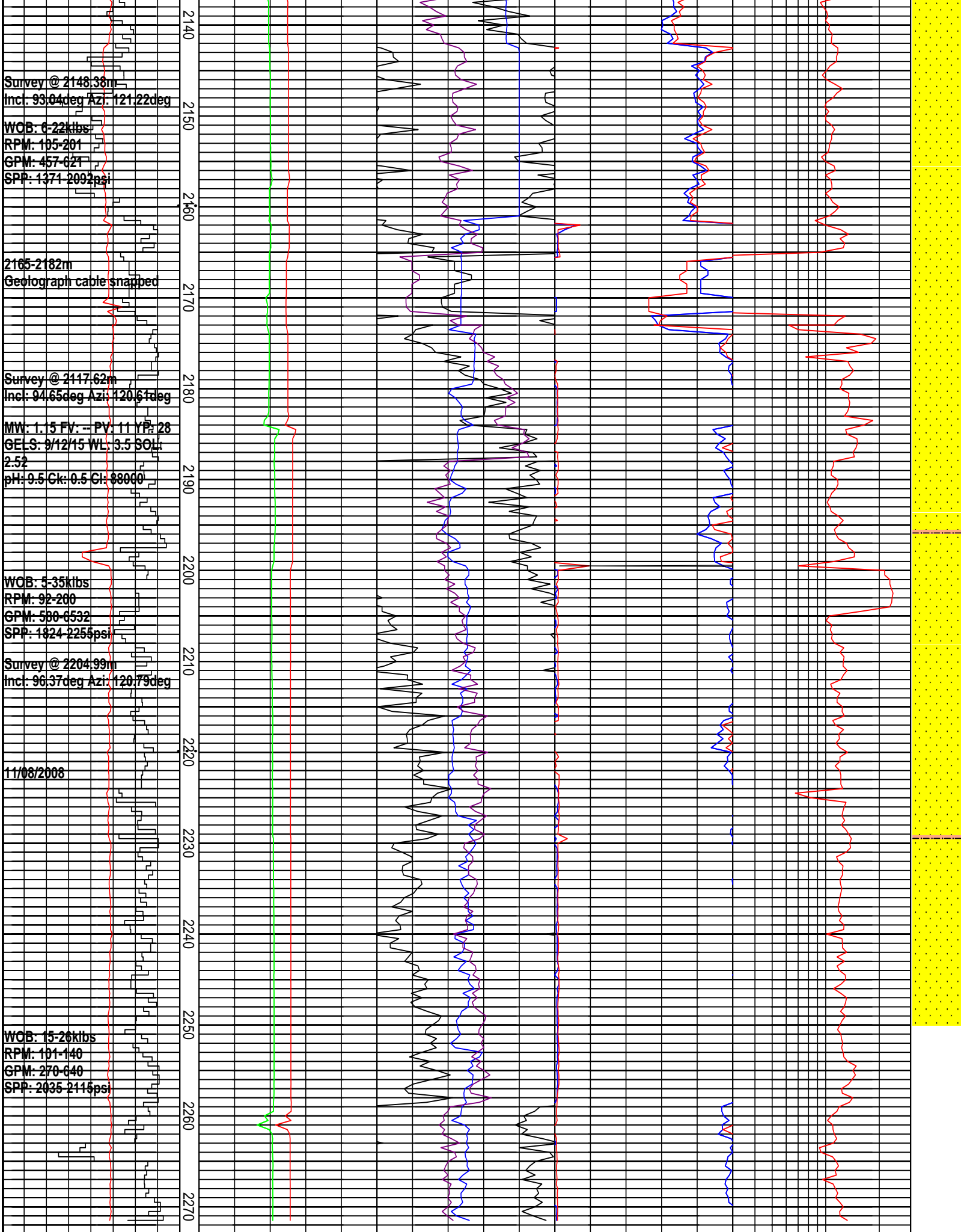
Created : 11/Aug/2008 6:12:02 AM

DRILLING DATA PLOT

HOOKLOAD		STANDPIPE					WOB Avg					TORQUE Avg					DXC		INTERPRETED LITHOLOGY
50 100 150 200 250 300 klbf		1000 2000 3000 4000 5000 psi					3.6 7.2 10.8 14.4 18 klbf					5 10 15 20 25 kft.lb					0.3 3 unitless		
ROP		FLOW IN					Bit RPM					TORQUE Max							
100 75 50 25 m/hr		240 480 720 960 1200 USg/min					50 100 150 200 250 RPM					5 10 15 20 25 kft.lb							
MD meters 1:500		VDEPTH					WOB					TORQUE							
							8 16 24 32 40 klbf					0.7 1.4 2.1 2.8 3.5 kft.lb							







Survey @ 2148.36m
 Incl: 93.04deg Azi: 121.22deg
 WOB: 6-22kibs
 RPM: 105-201
 GPM: 457-627
 SPP: 1371-2092psi

2165-2182m
 Geograph cable snapped

Survey @ 2117.62m
 Incl: 94.65deg Azi: 120.61deg

MW: 1.15 FV: -PV: 11 YP: 28
 GELS: 9/12/15 WL: 3.5 SOL:
 2.52
 pH: 9.5 Ck: 0.5 Cl: 88000

WOB: 5-35kibs
 RPM: 92-200
 GPM: 500-6532
 SPP: 1824-2255psi

Survey @ 2204.99m
 Incl: 96.37deg Azi: 120.79deg

11/08/2008

WOB: 15-26kibs
 RPM: 101-140
 GPM: 270-640
 SPP: 2035-2115psi

DRILLING DATA PLOT

HOOKLOAD		STANDPIPE		WOB Avg		TORQUE Avg		DXC	
50 100 150 200 250 300 <small>klbf</small>	MD meters 1:500	1000 2000 3000 4000 5000 <small>psi</small>	VEDEPTH	3.6 7.2 10.8 14.4 18 <small>klbf</small>	0.3	5 10 15 20 25 <small>kft.lb</small>	3	unitless	INTERPRETED LITHOLOGY
ROP <small>m/hr</small>		FLOW IN <small>USg/min</small>		Bit RPM <small>RPM</small>		TORQUE Max <small>kft.lb</small>			
100 75 50 25 <small>m/hr</small>		240 480 720 960 1200 <small>USg/min</small>		50 100 150 200 250 <small>RPM</small>		5 10 15 20 25 <small>kft.lb</small>			
				WOB <small>klbf</small>		TORQUE <small>kft.lb</small>			
				8 16 24 32 40 <small>klbf</small>		0.7 1.4 2.1 2.8 3.5 <small>kft.lb</small>			